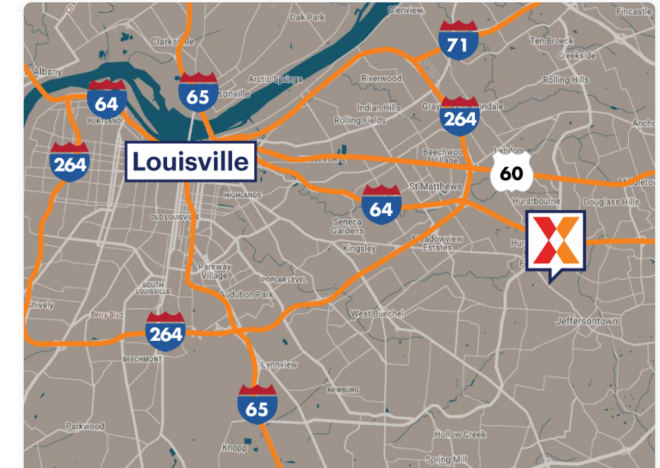
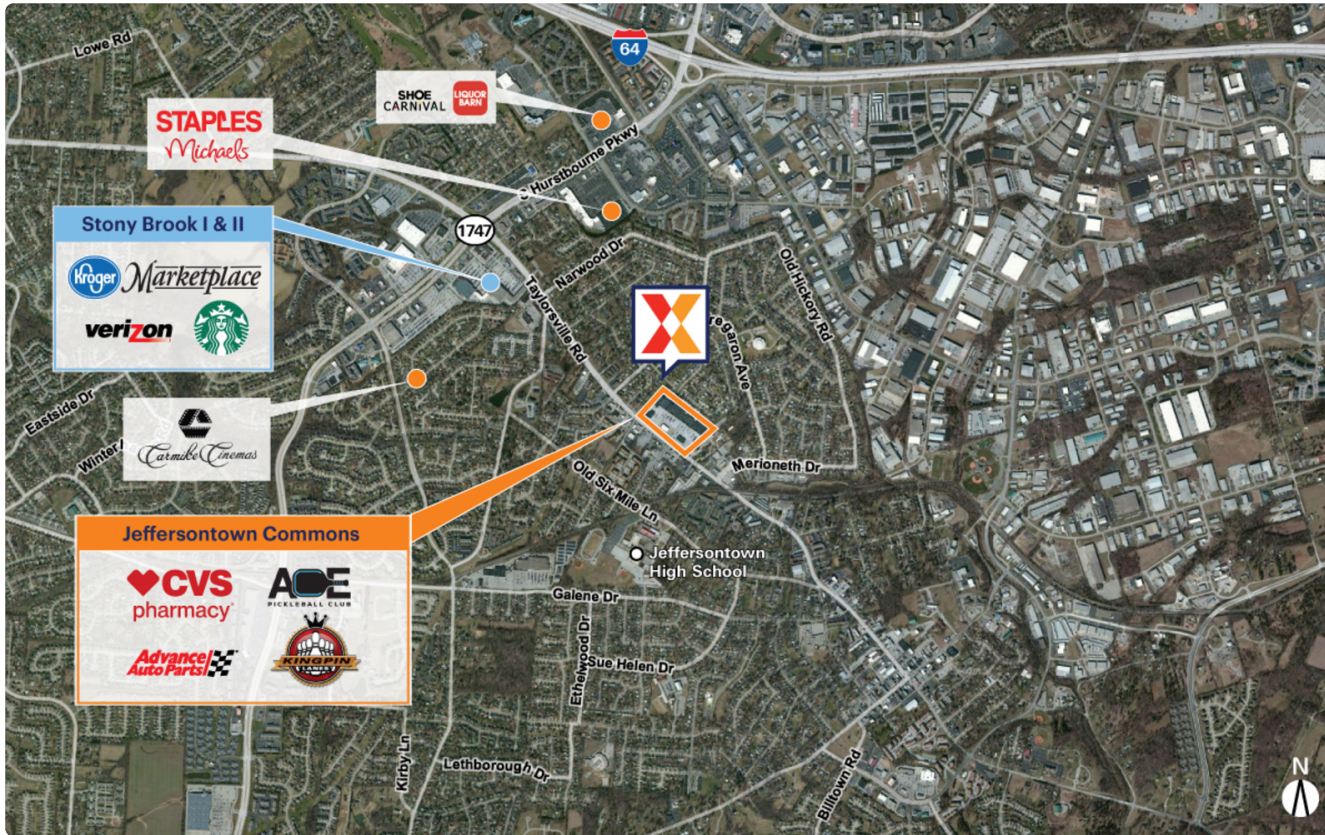


# Jeffersontown Commons

9503 Taylorsville Road | Jeffersontown, KY 40299

Jefferson County | Louisville/Jefferson County, KY-IN | 205,888 Sq Ft

38.2063, -85.5794



Demographics	1 Mile	3 Miles	5 Miles
Population	9,827	87,445	213,165
Daytime Pop.	14,770	84,858	214,271
Households	4,293	37,253	91,922
Income	\$88,094	\$110,410	\$109,996

Source: Synergos Technologies, Inc. 2024

Located in a high-density area of Louisville, KY with 87K+ residents within 3 miles

Surrounded by a highly educated trade area with 44% with a college education within 3 miles

High visibility from 26K+ vehicles daily on Taylorsville Rd (Kalibrate 2025)

Proximity to Jeffersontown High School with 950 students (Nat'l Center for Education Statistics 2023-24)



# Jeffersontown Commons

9503 Taylorsville Road | Jeffersontown, KY 40299

Jefferson County Louisville/Jefferson County, KY-IN 205,888 Sq Ft

38.2063, -85.5794



## Available Spaces

07 28,557 Sq Ft 360° WS1 2,954 Sq Ft 360°

## Current Tenants Space size listed in square feet

09	Kingpin Lanes	65,730
10	Dollar Tree	13,514
10BC	Product Simple	7,500
11A	Dollar General	7,500
12	Prime Hair Salon	2,400
12A	Clean Eatz	2,400
13	Your Skin Beauty Bar	1,000
14	U of L Health	2,000
16	Ace Pickleball Club	38,380
23	The Popcorn Station	3,396
23A	Smokers 21	1,730
24	Kentucky One Health	3,271
ES1	Little Caesars	1,697
FS1	King Donuts	1,907
FS4	CVS	10,055
WS2	Optic Klear	2,506
WS3	Subway	1,201
WS4	Cricket Wireless	1,257
WS5	Eyemart Express	2,685
WS6	H&R Block	1,530
WS7	Double Dragon	1,521
WS8	Twin Nails	1,197

This site plan is for illustrative and information purposes only, showing the general layout of the shopping center; and is not a legal survey. Brixmor makes no representation or warranty that the shopping center is exactly as depicted as site conditions and tenant mix are subject to change over time. 1013

